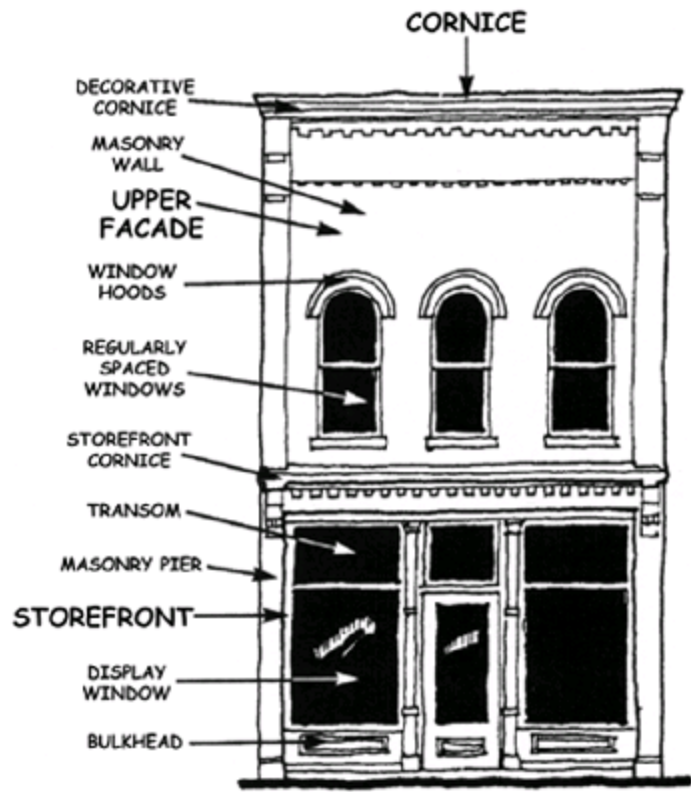
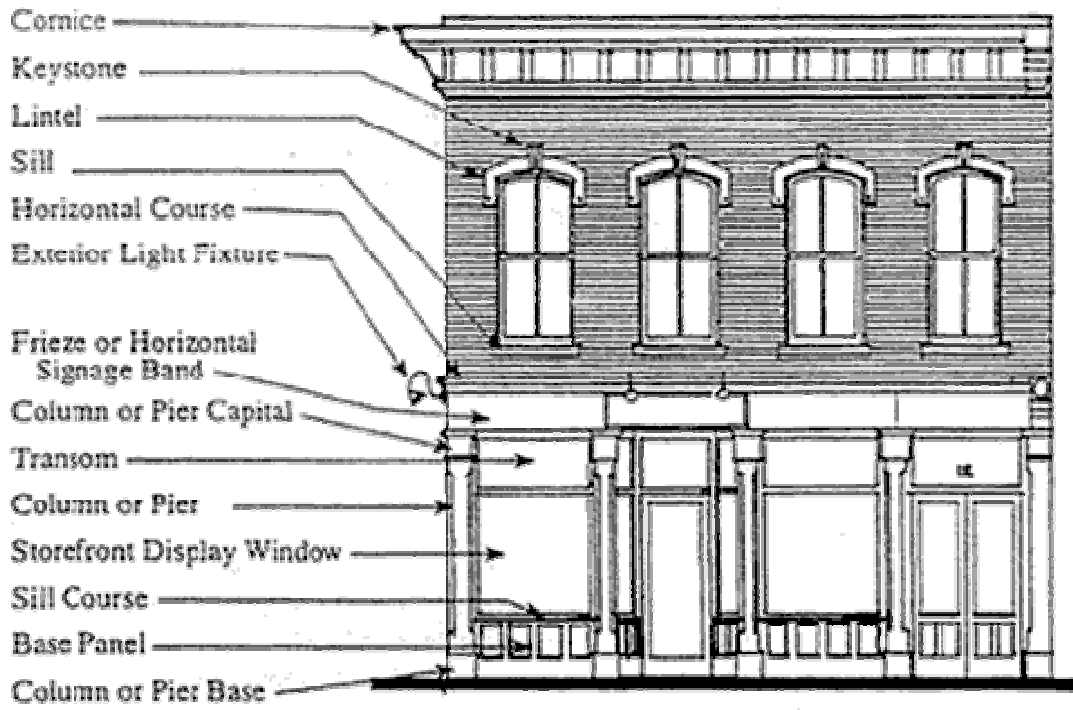
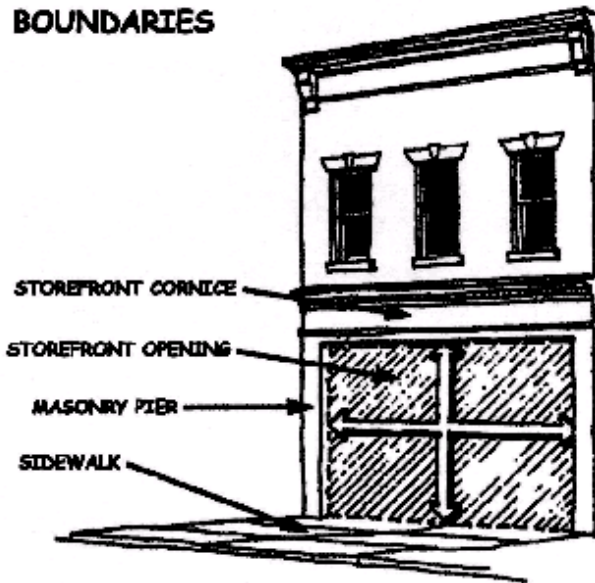


# Anatomy of a Building Façade



TRADITIONAL  
FACADE  
COMPONENTS

## STOREFRONT BOUNDARIES



## COMMON STOREFRONT MATERIALS

**CORNICE**  
CAST IRON, WOOD, SHEET METAL, BRICK, STONE, OR TERRA COTTA

**TRANSOM WINDOWS**  
CLEAR, TINTED, STAINED OR ETCHED.

**PIERS**  
MASONRY TO MATCH UPPER FACADE.

**DISPLAY WINDOWS**  
CLEAR GLASS.

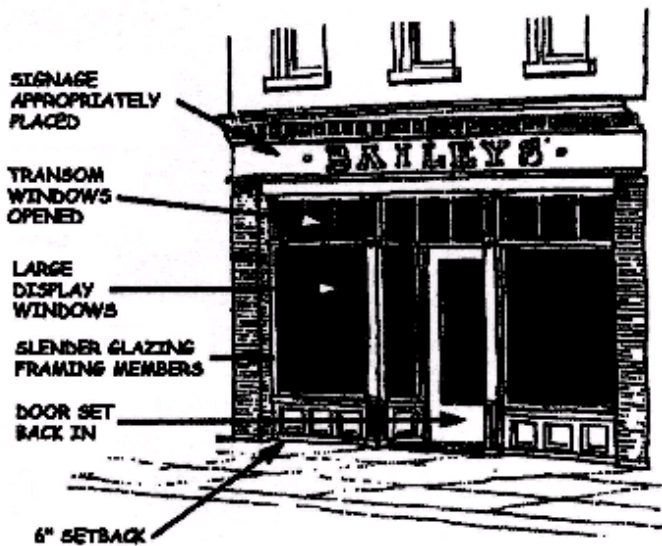
**STOREFRONT FRAME**  
WOOD, CAST IRON, STEEL.

**BULKHEAD**  
WOOD PANELS, POLISHED STONE, GLASS, TILE, OR ALUMINUM.



## TRADITIONAL STOREFRONT DESIGN

STOREFRONT FITS WITHIN BOUNDARIES



**BASE COLOR**

- WALL SURFACES
- STOREFRONT PIERS
- CORNICE - WHEN SAME MATERIAL AS WALL

**MAJOR TRIM COLOR**

- CORNICE
- WINDOW HOODS
- WINDOW FRAMES
- STOREFRONT CORNICE
- STOREFRONT COLUMNS
- STOREFRONT & BULKHEADS

**MINOR TRIM COLOR**

- WINDOW SASH
- DCORS

**ACCENT COLORS**

- SMALL DETAILS ON WINDOW HOODS, CORNICES, COLUMNS & BULKHEADS

Thanks to the National Main Street Center for the illustrations.